

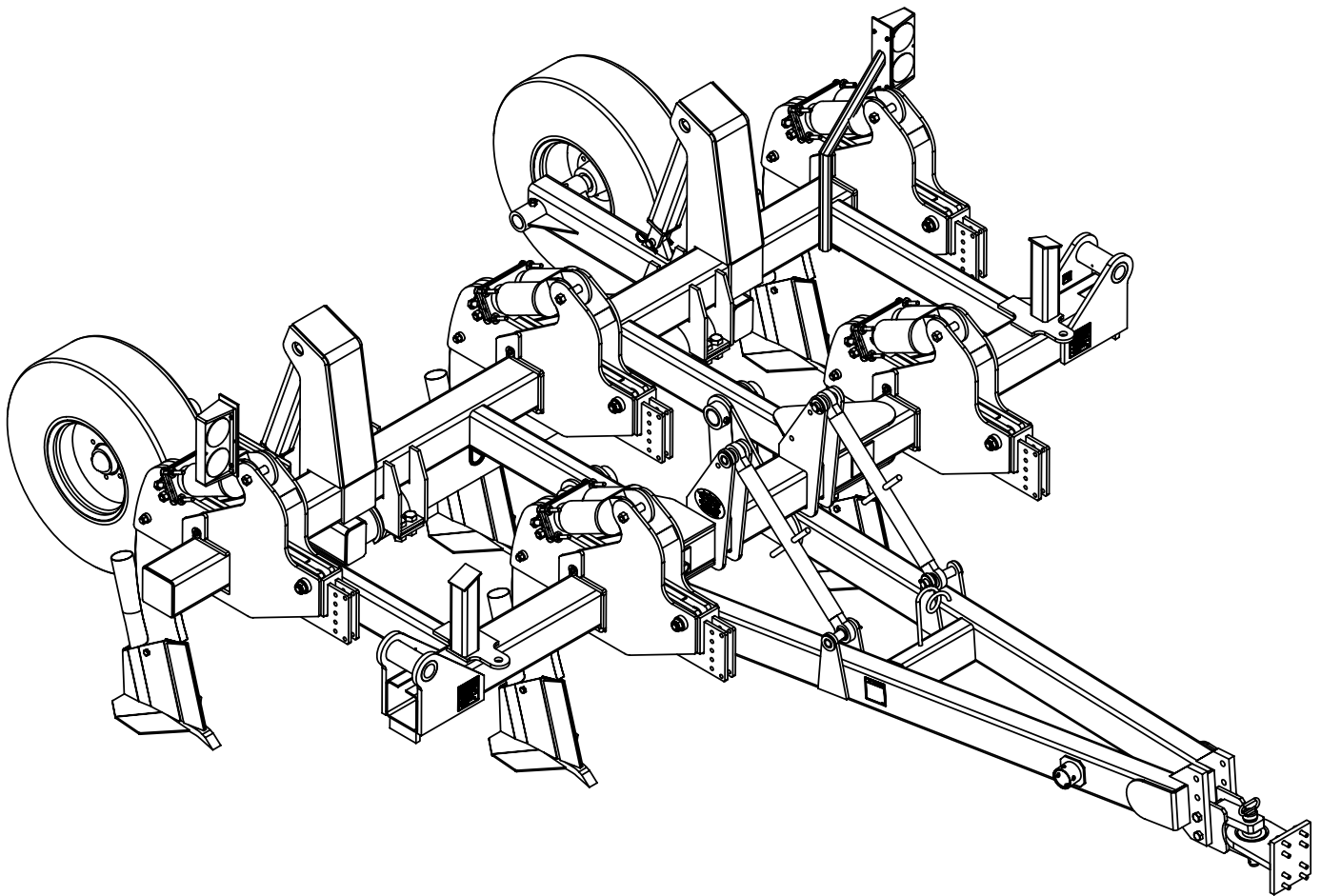


S I O U X
AUTOMATION CENTER, INC.

QUALITY PEOPLE, QUALITY PRODUCTS

SAC Trailer Injector

PARTS & OPERATION MANUAL



ASSEMBLY
CALIBRATION
OPERATION
REPLACEMENT PARTS

READ COMPLETE MANUAL CAREFULLY
BEFORE ATTEMPTING OPERATION!

SAC - SIOUX AUTOMATION - 877 1ST AVE. NW - SIOUX CENTER, IA 51250
PH: (712)-722-1488 - TOLL FREE: 1-866-722-1488
WWW.SIOUXAUTOMATION.COM

INTRODUCTION

Thank you for purchasing a Sioux Automation product. We feel you have made a wise choice and hope you are completely satisfied with your new piece of equipment. Your new Sioux Automation product is a durable, efficient and easy to use unit. Proper care and use will result in many years of service.



WARNING: TO AVOID PERSONAL INJURY OR DEATH, OBSERVE FOLLOWING INSTRUCTIONS:

Ensure that anybody present is clear before applying power to any machinery .

Never allow anyone in, near, or on machinery during transporting or use.

Do not exceed 20 miles per hour when towing machinery.

GENERAL INFORMATION

1. Unless otherwise specified, high-strength (grade5) (3 radial-line head markings) hex head bolts are used throughout assembly of this piece of equipment. proper part numbers and place order by **PART NO. and DESCRIPTION.**
2. Whenever terms “LEFT” and “RIGHT” are used in this manual it means from a position behind wagon box and facing forward.
3. When placing a parts order, refer to this manual for
4. Read assembly instructions carefully. Study assembly procedures and all illustrations before you begin assembly. Note which parts are used in each step. This unit must be assembled in proper sequence or complications will result.

Table of Contents

General information	3
Safety , Signal Words.....	4
Equipment Safety Guidelines	5
Lighting and Marking	5
Safety Sign Locations	6
Safety Sign Care	6
Tire Safety.....	6
Before Operation.....	7
During Operation	7-8
Following Operation	8
Highway and Transport Operations	9-10
Performing Maintenance.....	10
Bolt Torque	11
Main Frame Breakdown	12
Option Breakdowns	13-22
Maintenance and Lubrication	23

SAFETY

TAKE NOTE! THIS SAFETY ALERT SYMBOL FOUND THROUGHOUT THIS MANUAL IS USED TO CALL YOUR ATTENTION TO INSTRUCTIONS INVOLVING YOUR PERSONAL SAFETY AND SAFETY OF OTHERS. FAILURE TO FOLLOW THESE INSTRUCTIONS CAN RESULT IN INJURY OR DEATH!



SIGNAL WORDS

Note: use of following signal words **DANGER**, **WARNING**, and **CAUTION** with safety messages. Appropriate signal word for each has been selected using following guidelines:

DANGER:

Indicates an imminently hazardous situation that, if not avoided, will result in serious injury or death. This signal word is to be limited to most extreme situations typically for machine components which, for functional purposes, cannot be guarded.

WARNING:

Indicates a potentially hazardous situation that, if not avoided, could result in serious injury or death, and includes hazards that are exposed when guards are removed. It may also be used to alert against unsafe practices.

CAUTION:

Indicates a potentially hazardous situation that, if not avoided, may result in minor or moderate injury. It may also be used to alert against unsafe practices.

If you have questions not answered in this manual, require additional copies, or if your manual is damaged, please contact your dealer or Sioux Automation Inc., 877 1st Ave. NW Sioux Center, IA 51250
ph: (712)-722-1488 or 866-722-1488 <http://www.siouxautomation.com>



SAFETY..YOU CAN LIVE WITH IT



EQUIPMENT SAFETY GUIDELINES

Every year many accidents occur which could have been avoided by a few seconds of thought and a more careful approach to handling equipment. You, the operator, can avoid many accidents by observing the following precautions in this section. To avoid personal injury, study the following precautions and insist those working with you, or you yourself, follow them.

In order to provide a better view, certain illustrations in this manual may show an assembly with a safety shield removed. However, equipment should never be operated in this condition. Keep all shields in place. If shield removal becomes necessary for repairs, replace shield prior to use.

Replace any caution, warning, danger or instruction safety decal that is not readable or is missing. Location of such decals is indicated in this booklet.

Do not attempt to operate this equipment under the influence of alcohol or drugs.

Review safety instructions with all users annually.

Operator should be a responsible adult. **DO NOT ALLOW PERSONS TO OPERATE OR ASSEMBLE THIS UNIT UNTIL THEY HAVE DEVELOPED A THOROUGH UNDERSTANDING OF SAFETY PRECAUTIONS AND HOW IT WORKS.**

To prevent injury or death, use a tractor equipped with a roll over protective system (ROPS). Do not paint over, remove, or deface any safety signs or warning decals on your equipment. Observe all safety signs and practice instructions on them.

Never exceed limits of a piece of machinery. If its ability to do a job, or to do so safely is in question **DON'T TRY IT.**



LIGHTING AND MARKING

It is the responsibility of customer to know lighting and marking requirements of local highway authorities and to install and maintain equipment to provide compliance with regulations. Add extra lights when transporting at night or during periods of limited visibility.

Lighting kits are available from your dealer or from manufacturer.



SAFETY SIGN CARE

- Keep safety signs clean and legible at all times.
- Replace safety signs that are missing or have become illegible.
- Replacement parts that displayed a safety sign should also display current sign.
- Safety signs are available from your distributor, dealer parts department, or factory.

How to install safety signs:

- Be sure that installation area is clean and dry.
- Decide on exact position before you remove backing paper.
- Remove smallest portion of split backing paper.
- Align decal over specified area and carefully press small portion with exposed sticky backing in place.
- Slowly peel back remaining paper and carefully smooth remaining portion of decal into place.
- Small air pockets can be pierced with a pin and smoothed out using piece of decal backing paper.



TIRE SAFETY

- Failure to follow proper procedures when mounting a tire on a rim can produce an explosion which may result in a serious injury or death.
- Do not attempt to mount a tire unless you have proper equipment and experience to do job.
- Inflating or servicing tires can be dangerous. Whenever possible, trained personnel should be called to service and/or mount tires.
- Always order and install tires and wheels with appropriate type and load capacity to meet or exceed anticipated weight to be placed on the equipment.



REMEMBER

Your best assurance against accidents is a careful and responsible operator. If there is any portion of this manual or function you do not understand, contact your local authorized dealer or manufacturer.



BEFORE OPERATION:

- Carefully study and understand this manual.
- Do not wear loose-fitting clothing which may catch in moving parts.
- Always wear protective clothing and substantial shoes.
- It is recommended that suitable protective hearing and eye protection be worn.
- Operator may come in contact with certain materials which may require specific safety equipment relative to handling of such materials. (Examples: extremely dusty, molds, fungus, bulk fertilizers, etc.)
- Keep wheel and lug nuts tightened to specified torque.
- Assure that agricultural implement tires are inflated evenly.
- Give unit a visual inspection for any loose bolts, worn parts, or cracked welds, and make necessary repairs. Follow maintenance safety instructions included in this manual.
- Be sure there are no tools lying on or in equipment
- Do not use unit until you are sure that area is clear, especially around children and animals.
- Don't hurry learning process or take unit for granted. Ease into it and become familiar with your new equipment.
- Practice operation of your equipment and its attachments. Completely familiarize yourself and other operators with its operation before using.
- Make sure that brakes are evenly adjusted (if equipped with brakes)
- Use a tractor equipped with Roll Over Protection System (ROPS) and fasten your seat belt prior to starting the engine.
- Manufacturer does not recommend usage of a tractor with the ROPS removed.
- Move tractor wheels to widest recommended settings to increase stability.
- Do not allow anyone to stand between tongue or hitch and towing vehicle when backing up to equipment.



DURING OPERATION

- Beware of bystanders, **PARTICULARLY CHILDREN!** Always look around to make sure that it is safe to start engine of towing vehicle or move unit. This is particularly important with higher noise levels and quiet cabs, as you may not hear people shouting.
- **NO PASSENGERS ALLOWED-** Do not carry passengers anywhere on or in tractor or equipment.
- Keep hands and clothing clear of moving parts.
- Do not clean, lubricate, or adjust your equipment while it is moving.

- When halting operation, even periodically, set tractor or towing vehicles brakes, disengage PTO, shut off engine, and **remove ignition key**.
- Be especially observant of operating area and terrain. Watch for holes, rocks, or other hidden hazards. Always inspect area prior to operation.
 - DO NOT operate near edge of drop-off or banks.
 - DO NOT operate on steep slopes as overturn may result.
 - Operate up and down (not across) intermediate slopes. Avoid sudden starts and stops.
- Pick the most level possible route when transporting across fields. Avoid edges of ditches, gullies, and steep hillsides.
- Be extra careful when working on inclines.
- Maneuver tractor or towing vehicle at safe speeds.
- Avoid overhead wires or other obstacles. Contact with overhead lines could cause serious injury or death.
- Avoid loose gravel, rocks, and holes; they can be dangerous for equipment operation or movement.
- Allow for unit length when making turns.
- Do not walk or work under raised components or attachments unless securely positioned and blocked.
- Keep all bystanders, pets, and livestock clear of work area.
- Operate towing vehicle from operators seat only.
- Never stand alongside of unit with engine running or attempt to start engine and/or operate machine while standing alongside of unit.
- Never leave running equipment unattended.
- As a precaution, always recheck hardware on equipment following every 100 hours of operation. Correct all problems. Follow maintenance safety procedures.



FOLLOWING OPERATION

- Following operation, or when unhitching, stop tractor or towing vehicle, set brakes, shut off engine and **remove ignition key**.
- Store unit in an area away from human activity.
- Do not park equipment where it will be exposed to livestock for long periods of time. Damage and livestock injury could result.
- Do not permit children to play on or around stored unit.
- Make sure all parked machines are on a hard, level surface and engage all safety devices.
- Wheel chocks may be needed to prevent unit from rolling.



HIGHWAY AND TRANSPORT OPERATIONS

- **SAFETY CHAINS:** If equipment is going to be transported on a public highway, Always follow state and local regulations regarding safety chains and auxiliary lighting. Be sure to check with local law enforcement agencies for your own particular regulations. If required safety chains should be obtained and installed. Only safety chains (not elastic or nylon/plastic tow straps) should be used to retain connection between towing and towed machines in event of separation of primary attaching system. Use a high strength, appropriately sized hitch pin with a mechanical retainer and attach safety chains. Criss cross chains under tongue and secure to draw bar cage, mounting loops, or bumper frame.

- Adopt safe driving practices:
 - Keep brake pedals latched together at all times. **NEVER USE INDEPENDENT BRAKING WITH MACHINE IN TOW, LOSS OF CONTROL AND/OR UPSET OF UNIT CAN RESULT.**
 - Always drive at a safe speed relative to local conditions, ensure that your speed is low enough for an emergency stop. Keep speed to a minimum.
 - Reduce speed prior to turns to avoid risk of overturning.
 - Always keep tractor or towing vehicle in gear to provide engine braking when going downhill. Do not coast.
 - Do not drink and drive!

- Comply with state and local laws governing highway safety and movement of farm machinery on public roads.

- Use approved accessory lighting, flags and necessary warning devices to protect operators of other vehicles on highway during transport. Various safety lights and devices are available from your dealer.

- Use of flashing amber lights is acceptable in most localities. However, some localities prohibit their use. Local laws should be checked for all highway lighting and marking requirements.

- When driving tractor and equipment on road under 20 m.p.h. (40 kph) at night or during day, use flashing amber warning lights and a slow moving vehicle (SMV) identification emblem.

- Plan your route to avoid heavy traffic.

- Be a safe and courteous driver. Always yield to oncoming traffic in all situations, including narrow bridges, intersections, etc.

- Be observant of bridge load ratings. Do not cross bridges rated lower than gross weight at which you are operating.

- Watch for obstructions overhead and side to side while transporting.
- Always operate equipment in a position to provide maximum visibility. Make allowances for increased length and weight of equipment when making turns, stopping unit, etc.



PERFORMING MAINTENANCE

- Good maintenance is your responsibility. Poor maintenance is an invitation to trouble.
- Make sure there is plenty of ventilation. Never operate engine of towing vehicle in a closed building. Exhaust fumes may cause asphyxiation.
- Before working on this machine, stop towing vehicle, set brakes, shut off engine and **remove ignition key**.
- Always use safety support and block wheels. Never use a jack to support machine.
- Always use proper tools or equipment for job at hand.
- Use extreme caution when making adjustments.
- Follow torque chart in this manual when tightening bolts and nuts.
- Never use your hands to locate a hydraulic leak on attachments. Use a small piece of cardboard or wood. Hydraulic fluid escaping under pressure can penetrate skin.
- Openings in skin and minor cuts are susceptible to infection from hydraulic fluid.
Without immediate medical treatment, serious infection and reactions can occur.
- When disconnecting hydraulic lines, shut off hydraulic supply and relieve all hydraulic pressure.
- Replace **all shields** and **guards** after servicing and before moving.
- After servicing, be sure all tools, parts and service equipment are removed.
- Do not allow grease or oil to build up on any steps or platform.
- When replacing bolts, refer to owners manual.
- Refer to bolt torque chart for head identification marking.
- Where replacement parts are necessary for periodic maintenance and servicing, genuine factory replacement parts must be used to restore your equipment to original specifications. Manufacturer will not claim responsibility for use of unapproved parts or accessories and other damages as a result of their use.
- If equipment has been altered in any way from original design, manufacturer does not accept any liability for injury or warranty.
- A fire extinguisher and first aid kit should be kept readily accessible while performing maintenance on this equipment

BOLT TORQUE

TORQUE DATA FOR STANDARD NUTS, BOLTS, AND CAPSCREWS.

Tighten all bolts to torques specified in chart unless otherwise noted. Check tightness of bolts periodically, using bolt chart as guide. Replace hardware with same grade bolt.

NOTE: Unless otherwise specified, high-strength Grade 5 hex bolts are used throughout assembly of equipment.



Torque Specifications

Bolt Torque for Standard bolts *

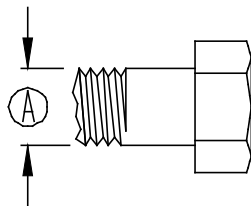
"A"	GRADE 2		GRADE 5		GRADE 8	
	lb-ft	(N.m)	lb-ft	(N.m)	lb-ft	(N.m)
1/4"	6	(8)	9	(12)	12	(16)
5/16"	10	(13)	18	(25)	25	(35)
3/8"	20	(27)	30	(40)	45	(60)
7/16"	30	(40)	50	(70)	80	(110)
1/2"	45	(60)	75	(100)	115	(155)
9/16"	70	(95)	115	(155)	165	(220)
5/8"	95	(130)	150	(200)	225	(300)
3/4"	165	(225)	290	(390)	400	(540)
7/8"	170	(230)	420	(570)	650	(880)
1"	225	(300)	630	(850)	970	(1310)

Bolt Torque for Metric bolts *

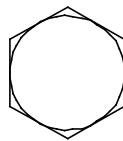
"A"	CLASS 8.8		CLASS 9.8		CLASS 10.9	
	lb-ft	(N.m)	lb-ft	(N.m)	lb-ft	(N.m)
6	9	(13)	10	(14)	13	(17)
7	15	(21)	18	(24)	21	(29)
8	23	(31)	25	(34)	31	(42)
10	45	(61)	50	(68)	61	(83)
12	78	(106)	88	(118)	106	(144)
14	125	(169)	140	(189)	170	(230)
16	194	(263)	216	(293)	263	(357)
18	268	(363)	--	--	364	(493)
20	378	(513)	--	--	515	(689)
22	516	(699)	--	--	702	(952)
24	654	(886)	--	--	890	(1206)

Torque figures indicated are valid for non-greased or non-oiled threads and heads unless otherwise specified. Therefore, do not grease or oil bolts or capscrews unless otherwise specified in this manual. When using locking elements, increase torque values by 5%.

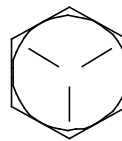
* GRADE or CLASS value for bolts and capscrews are identified by their head markings.



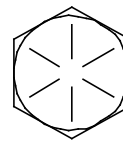
GRADE-2



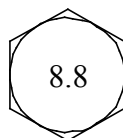
GRADE-5



GRADE-8



CLASS 8.8



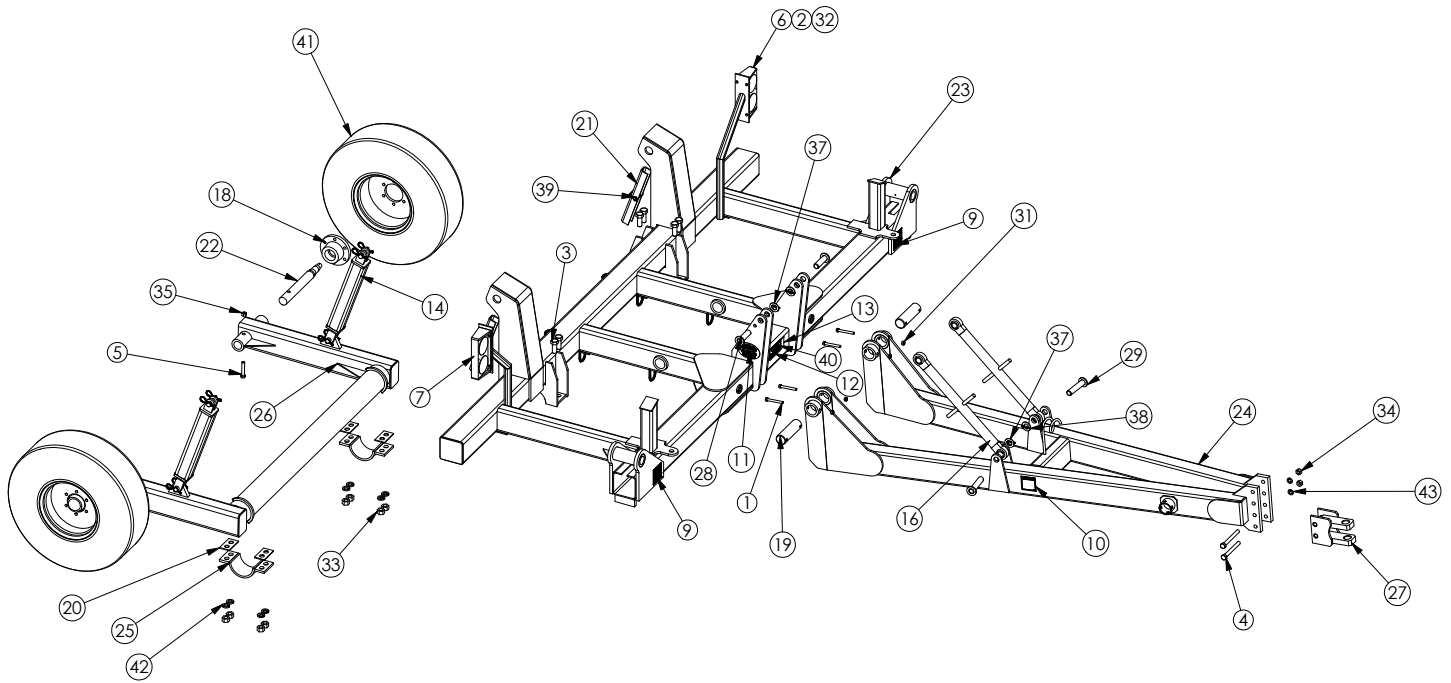
CLASS 9.8



CLASS 10.9

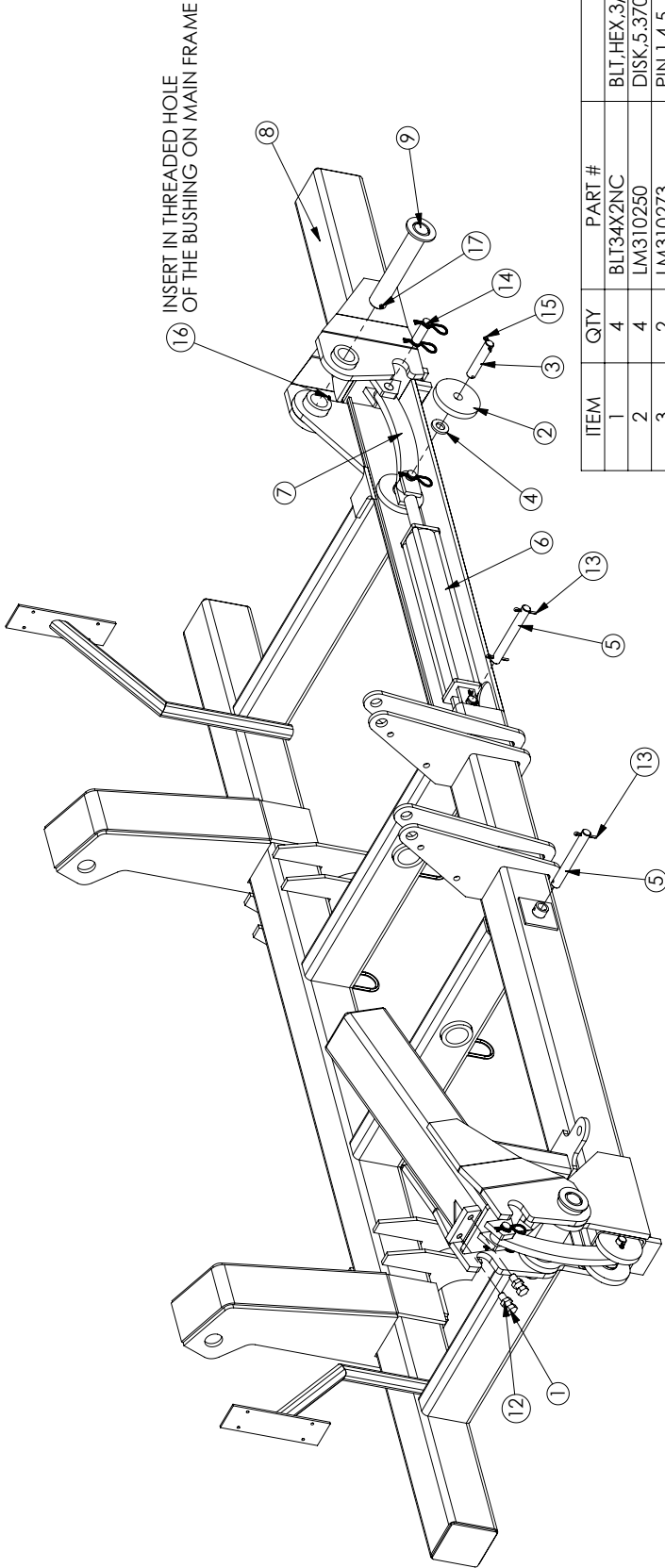


Main Frame Parts Breakdown



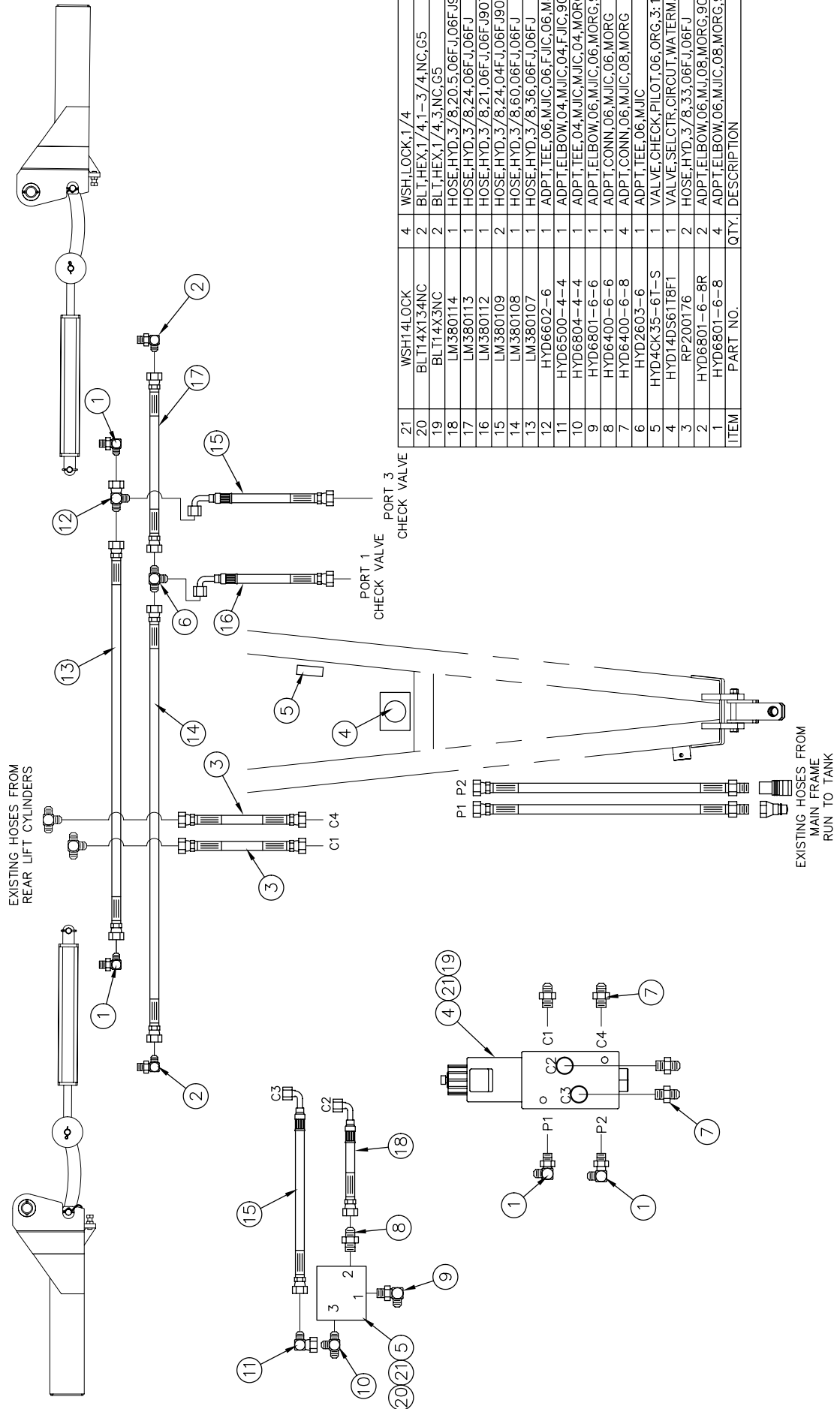
ITEM #	QTY	PART #	DESCRIPTION
1	4	BLT12X4NC	BLT,HEX,1/2,4,NC,G5
2	8	BLT14X1NC	BLT,HEX,1/4,1,NC,G5
3	8	BLT1X212NC	BLT,HEX,1,2-1/2,NF,G8
4	2	BLT34X7NCG8	BLT,HEX,3/4,7,NC,G8
5	2	BLT58X312NC	BLT,HEX,5/8,3-1/2,NC,G5
6	1	BLZ40762	LIGHT,TAIL,AMBER,RED,RH
7	1	BLZ40763	LIGHT,TAIL,AMBER,RED,LH
8	4	DEC102	DECAL,GRS,GUN,PICTURE
9	2	DEC108	DECAL,WARNING,PART,MOVING,4,4
10	2	DEC119	DECAL,RPAC,LIMIT,SPEED
11	2	DEC128	DECAL,SAC,LOGO,NEW,4,5,625
12	1	DEC375	DECAL,MODEL,SERIAL,SAC,2,75,5
13	1	DEC393	DEC,FEMA,1,5,2,5
14	2	HYD3016FM	CYL,HYD,3,16,WLD,2500PSI,PNT
15	1	JACK178SWL	JACK,SIDEWIND,15,5000LBS
16	2	LM200002	LINK,TOP,JUMBO,CAT3,1,38,RH
17	1	LM200007	HARNES,LIGHT,WESBAR,35,7PIN
18	2	LM200009	HUB,WHEEL,6BLT,6BC,3500#CAP
19	2	LM310221	PIN,PIVOT,HITCH,FRAME
20	4	LM310320	SHIM,AXLE,LM,TOOLBAR
21	2	LM310342	STOP,CYL,AXLE,LM,TLBR
22	2	LM310343	SPINDLE,2,18,.69HOLE
23	1	LM380065	FRAME,TOOLBAR,WLD
24	1	LM380066	HITCH,LM,TOOLBAR,WLD
25	2	LM380070	BRKT,AXLE,TOOLBAR,LM
26	1	LM380071	AXLE,WHEEL,TOOLBAR,LM,WLD
27	1	LM380086	HITCH,ASSY,SCKT,WLD
28	2	LM380091	PIN,TOP,TIEROD
29	2	LM380092	PIN,BOT,TIEROD
30	1	LM380105	ASSY,HYD,LM,TLBR
31	4	NUT12LOCKNC	NUT,LOCK,1/2,NC,G5
32	8	NUT14LOCKNC	NUT,LOCK,PUNCH,1/4,NC,G5
33	8	NUT1NC	NUT,HEX,1,NC,G5
34	2	NUT34NCG8	NUT,HEX,3/4,NC,G8
35	2	NUT58LOCKNC	NUT,LOCK,5/8,NC,G5
36	2	SP4710093	STOP,CYL,1-1/8 THRU 1-1/2,RAM
37	4	SPBUS114WR14G	BUSHING,MACH,1,75,WR,14GA
38	4	SPCP18X2	PIN,COTTER,1/8,2
39	2	SPPPN51622PTL	PIN,LOCK,PTO,5/16,2-1/2,SQ
40	2	SPPR316X12A	RIVET,POP,3/16,1/2,ALUM
41	2	TA12.5LX15X6I	TA,12.5L,15,6H,NEW,1.125POS
42	8	WSH1LOCK	WSH,LOCK,1
43	2	WSH34LOCKG8	WSH,LOCK,3/4,G8

Wing Option Assembly Parts Breakdown



ITEM	QTY	PART #	DESCRIPTION
1	4	BLT34X2NC	BLT,HEX,3/4,2,NC,G5
2	4	LM310250	DISK,5.3700,1.0625,.8
3	2	LM310273	PIN,1,4,5
4	4	LM310274	SPACER,.25,1.0625,2.0000
5	2	LM310282	PIN,1,7
6	2	LM310284	CYL,HYD,2,20,TIEROD,2500PSI,PNT
7	2	LM310319	LINKAGE,WING,TOOLBAR
8	2	LM380073	WING,TOOLBAR,LM,WLD
9	2	LM380076	PIN,HINGE,WING,TOOLBAR
10	1	LM380090	ASSY,HYD,LM,TLBR,WINGS
11	1	LM380106	SWTCHBX,SOLNID,CNTRL,TOOLBAR
12	4	NUT34JAMNC	NUT,HEX,3/4,NC,G5
13	4	SPCP14X2	PIN,COTTER,1/4,2
14	2	SPCP275	PIN,CYL,1,2-3/4
15	4	SPCP316X112	PIN,COTTER,3/16,1-1/2
16	2	SPGZRK641	ZRK,GRS,1/4-28,MALE,STR
17	2	SPRP38X212	PIN,ROLL,3/8,2-1/2

Wing Option Hydraulic Breakdown

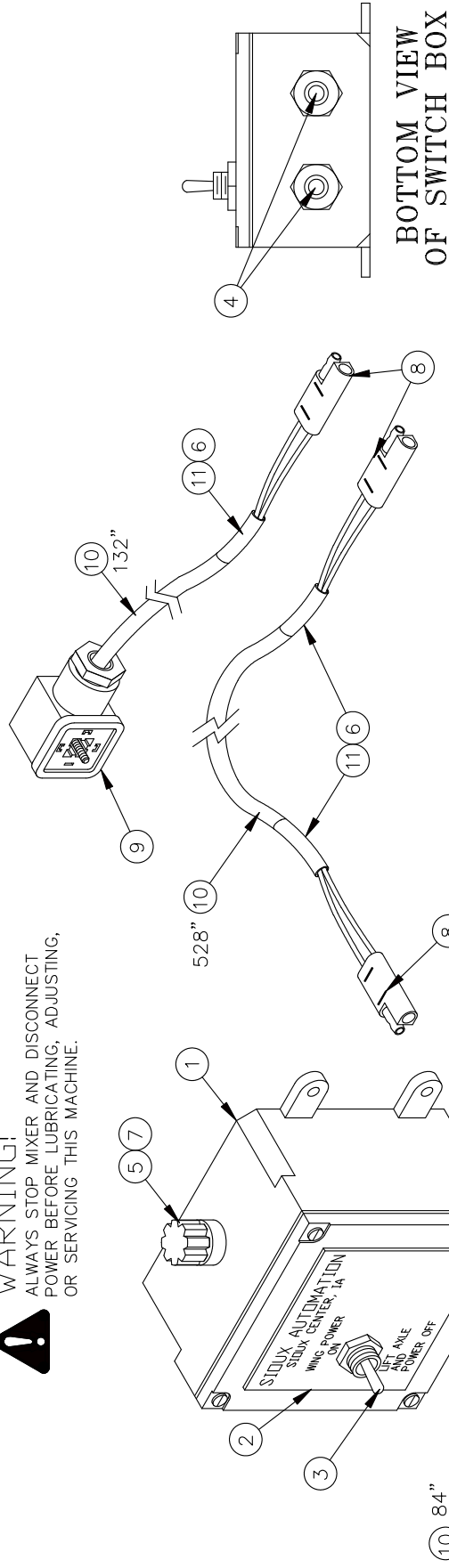


ITEM	PART NO.	QTY.	DESCRIPTION
21	WSH14LOCK	4	WSH,LOCK,1/4
20	BLT14X13ANC	2	BLT,HEX,1/4,1-3/4,NC,G5
19	BLT14X3ANC	2	BLT,HEX,1/4,3,NC,G5
18	LM380114	1	HOSE,HYD,3/8,20.5,06FJ,06FJ90T
17	LM380113	1	HOSE,HYD,3/8,24,06FJ,06FJ
16	LM380112	1	HOSE,HYD,3/8,21,06FJ,06FJ90T
15	LM380109	2	HOSE,HYD,3/8,24,04FJ,06FJ90T
14	LM380108	1	HOSE,HYD,3/8,60,06FJ,06FJ
13	LM380107	1	HOSE,HYD,3/8,36,06FJ,06FJ
12	HYD6602-6	1	ADPT,TEE,06,MJIC,06,F,JIC,06,MJIC
11	HYD6500-4-4	1	ADPT,ELBOW,04,MJIC,04,F,JIC,90D
10	HYD6804-4-4	1	ADPT,TEE,04,MJIC,MJIC,04,MORG
9	HYD6801-6-6	1	ADPT,ELBOW,06,MJIC,06,MORG,90D
8	HYD6400-6-6	1	ADPT,CONN,06,MJIC,06,MORG
7	HYD6400-6-8	4	ADPT,CONN,06,MJIC,08,MORG
6	HYD2603-6	1	ADPT,TEE,06,MJIC
5	HYD4CK35-6T-S	1	VALVE,CHECK,PILOT,06,ORG,3:1
4	HYD14DS61T8F1	1	VALVE,SELC,TR,CIRCUIT,WATERMAN
3	RP200176	2	HOSE,HYD,3/8,33,06FJ,06FJ
2	HYD6801-6-8R	2	ADPT,ELBOW,06,MJ,08,MORG,90D,R
1	HYD6801-6-8	4	ADPT,ELBOW,06,MJIC,08,MORG,90D
	PART NO.		DESCRIPTION

Wing Option Electrical Parts Breakdown



! WARNING!
 ALWAYS STOP MIXER AND DISCONNECT
 POWER BEFORE LUBRICATING, ADJUSTING,
 OR SERVICING THIS MACHINE.

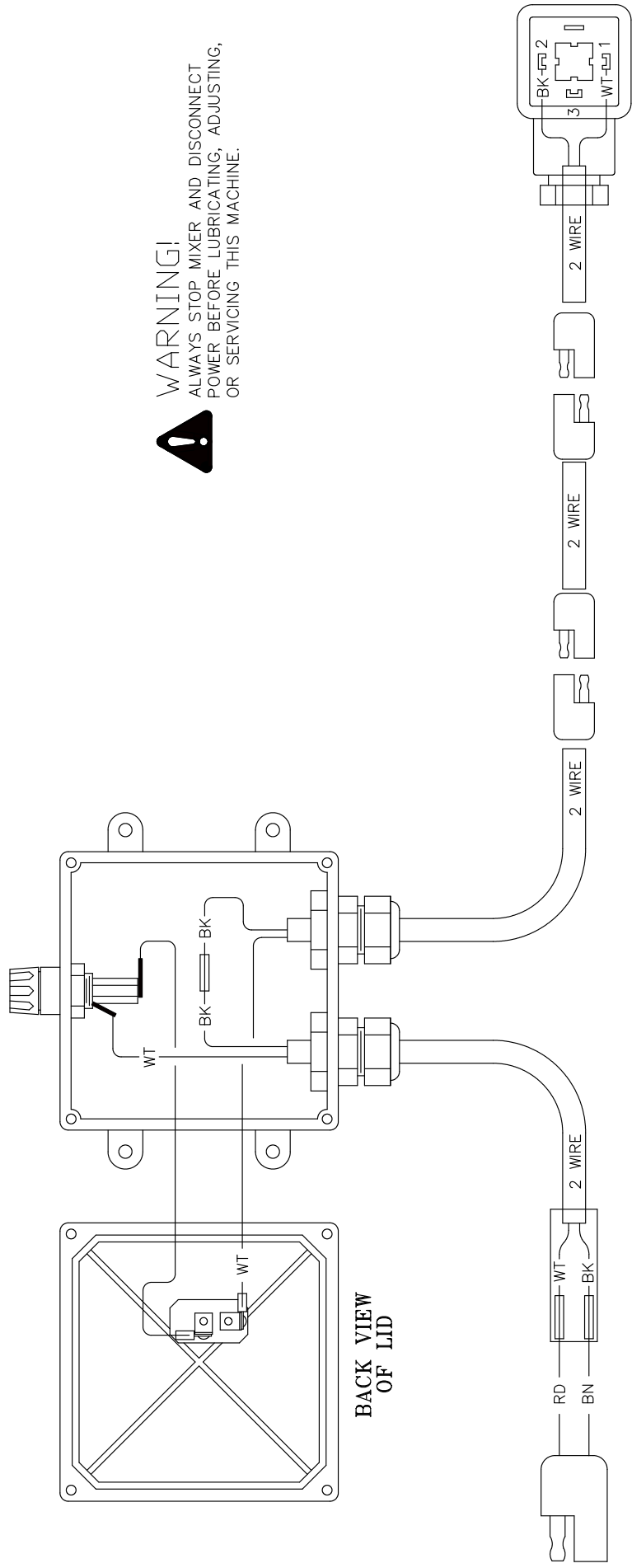


**BOTTOM VIEW
 OF SWITCH BOX**

ITEM	PART NO.	QTY.	DESCRIPTION
11	SCA18SHRINK	6	TUBE,.125,SHRINK,BLK
10	SCACORD1825J	828	CORD,BULK,18,2,SJ
9	HYD0212291100	1	CONN,DIN
8	SCA2WAY	5	CONN,2WAY,RUBBER
7	SCA345913	1	HOLDER,FUSE,RR,MOUNT
6	SCA38SHRINK	10	TUBE,.38,SHRINK,BLK
5	JES3AG10A	1	FUSE,10AMP,GLASS,.25,1.25
4	SCA599-028	2	RELIEF,STRAIN,POWER,EATON
3	SCASPSTSO	1	SWITCH,TOGGLE,SPST,SO
2	LM200010	1	FACE,REMOTE,LM,TLBR
1	SCAPVC4X4X2	1	BOX,PVC,4X4X2

NOTE:
 1.) SEE PRINT #LM380106-1
 FOR SCHEMATIC LAYOUT.
 2.) REFER TO MON100869
 FOR DETAIL OF ITEM #1

Wing Option Electrical Parts Breakdown

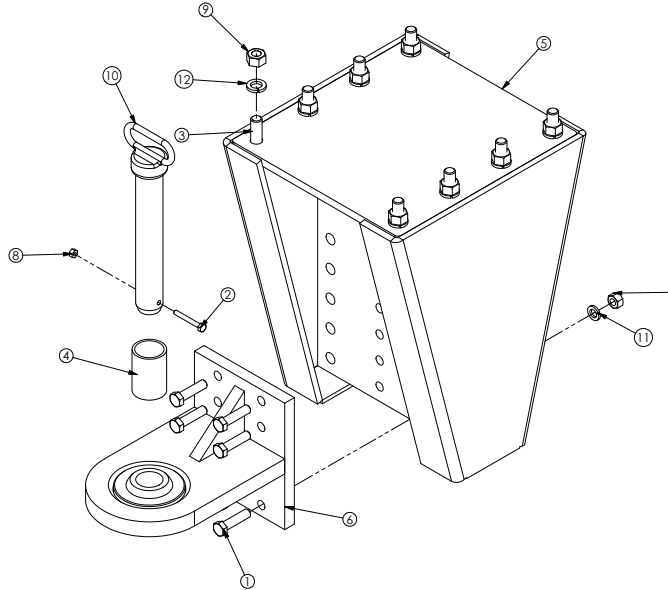


WARNING!
ALWAYS STOP MIXER AND DISCONNECT
POWER BEFORE LUBRICATING, ADJUSTING,
OR SERVICING THIS MACHINE.

Hitch Option Parts Breakdown

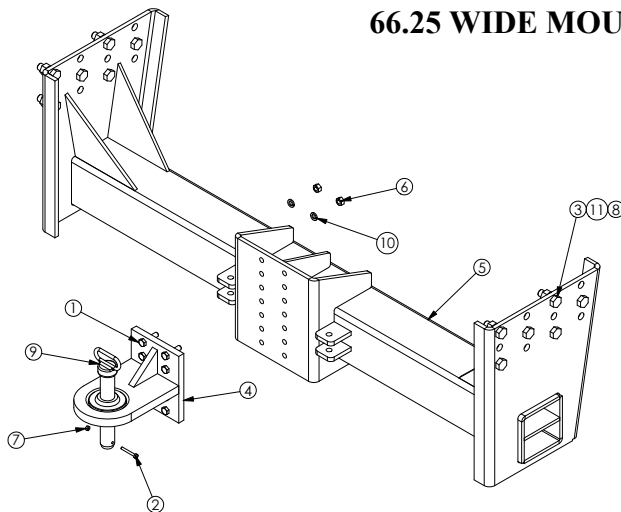


A-FRAME MOUNT



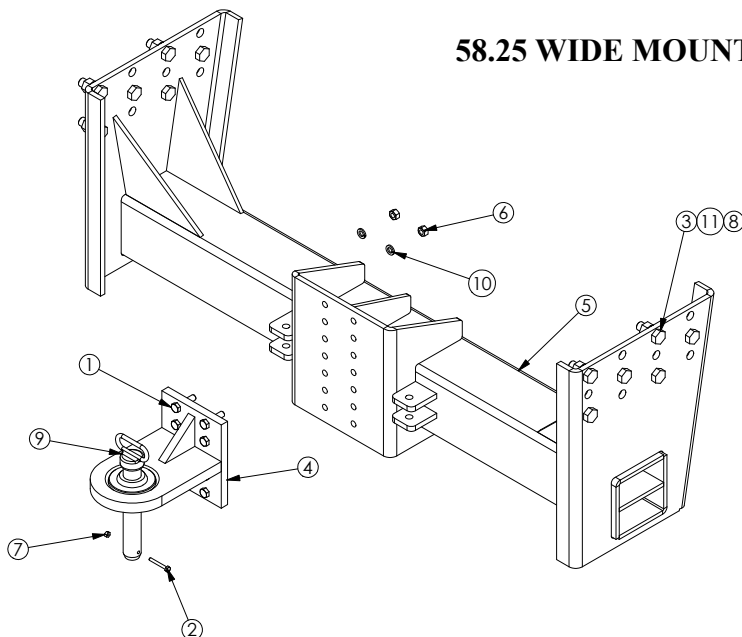
ITEM #	QTY.	PART #	DESCRIPTION
1	8	BLT12X2NF	BLT,HEX,1/2,2,NF,G8
2	1	BLT14X2NC	BLT,HEX,1/4,2,NC,G5
3	8	BLT58X2NC	BLT,HEX,5/8,2,NC,G5
4	1	LM310585	WRM112UTEPIPE,2,75
5	1	LM380063	HITCH,ADPT,PLOW,PINTLE
6	1	LM380081	HITCH,RCVR,SOCKET,WLD
7	8	NUT12NF	NUT,HEX,1/2,NF,G8
8	1	NUT14LOCKNC	NUT,LOCK,PUNCH,1/4,NC,G5
9	8	NUT58NC	NUT,HEX,5/8,NC,G5
10	1	SPHPN112	PIN,HITCH,1-1/2
11	8	WSH12LOCKG8	WSH,LOCK,1/2,G8
12	8	WSH58LOCK	WSH,LOCK,5/8

66.25 WIDE MOUNT



ITEM #	QTY.	PART #	DESCRIPTION
1	8	BLT12X2NF	BLT,HEX,1/2,2,NF,G8
2	1	BLT14X2NC	BLT,HEX,1/4,2,NC,G5
3	12	BLT34X2NC	BLT,HEX,3/4,2,NC,G5
4	1	LM380081	HITCH,RCVR,SOCKET,WLD
5	1	LM380135	HITCHBAR,TLBR,WAGON,66.25
6	8	NUT12NF	NUT,HEX,1/2,NF,G8
7	1	NUT14LOCKNC	NUT,LOCK,PUNCH,1/4,NC,G5
8	12	NUT34NC	NUT,HEX,3/4,NC,G5
9	1	SPHPN112	PIN,HITCH,7/8
10	8	WSH12LOCKG8	WSH,LOCK,1/2,G8
11	12	WSH34LOCK	WSH,LOCK,3/4

58.25 WIDE MOUNT

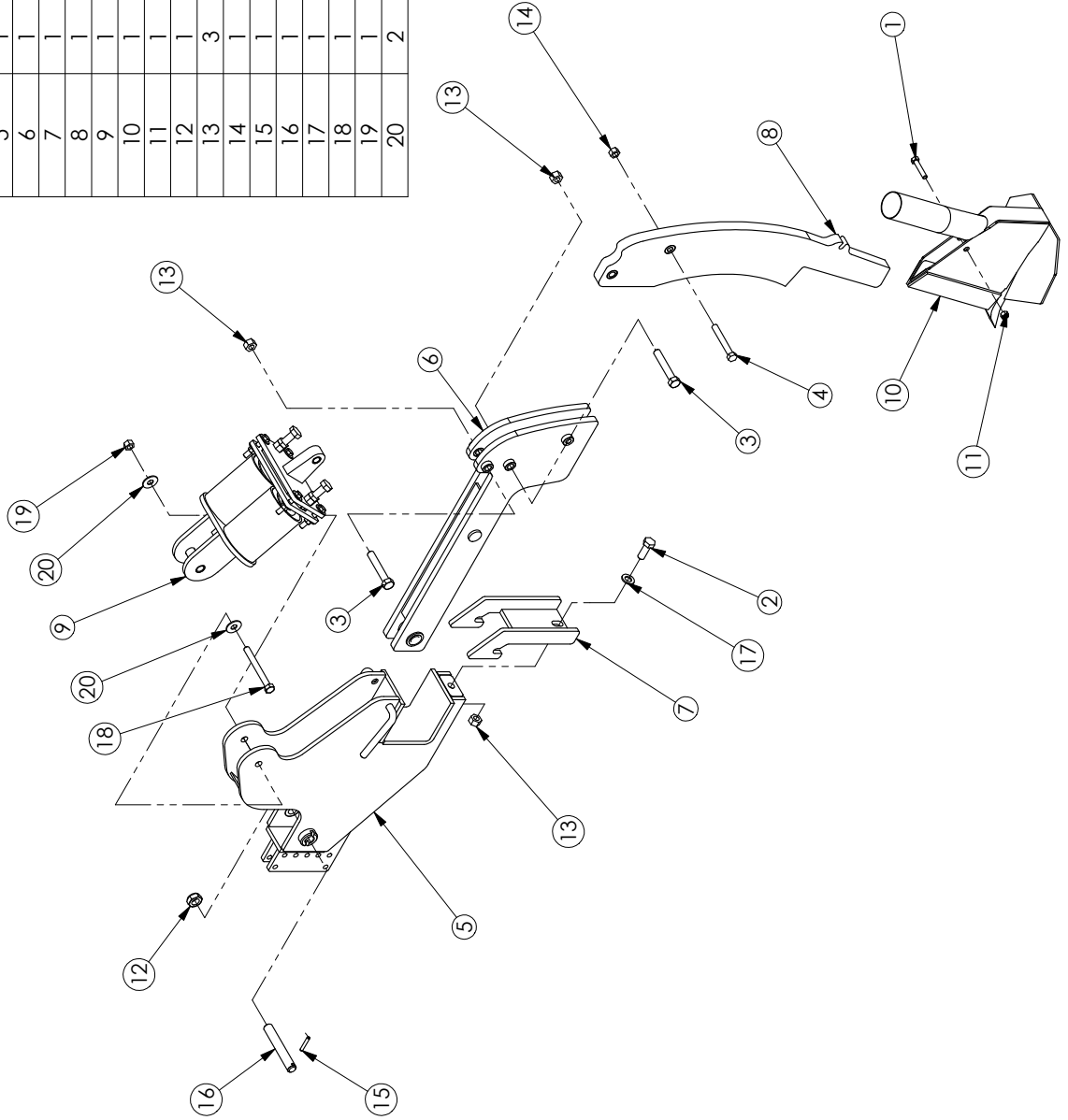


ITEM #	QTY.	PART #	DESCRIPTION
1	8	BLT12X2NF	BLT,HEX,1/2,2,NF,G8
2	1	BLT14X2NC	BLT,HEX,1/4,2,NC,G5
3	12	BLT34X2NC	BLT,HEX,3/4,2,NC,G5
4	1	LM380081	HITCH,RCVR,SOCKET,WLD
5	1	LM380136	HITCHBAR,TLBR,WAGON,58.25
6	8	NUT12NF	NUT,HEX,1/2,NF,G8
7	1	NUT14LOCKNC	NUT,LOCK,PUNCH,1/4,NC,G5
8	12	NUT34NC	NUT,HEX,3/4,NC,G5
9	1	SPHPN112	PIN,HITCH,7/8
10	8	WSH12LOCKG8	WSH,LOCK,1/2,G8
11	12	WSH34LOCK	WSH,LOCK,3/4

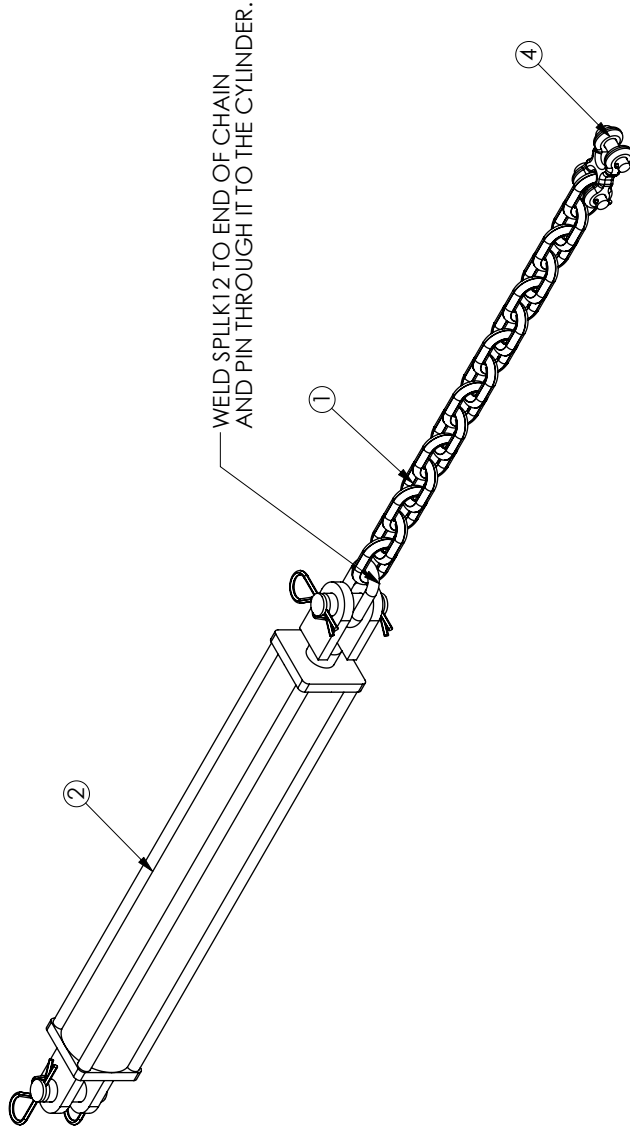
Magnum Shank Kit



ITEM #	QTY	PART #	DESCRIPTION
1	1	BLT12X212NC	BLT,HEX,1/2,2-1/2,NC,G5
2	1	BLT34X2NC	BLT,HEX,3/4,2,NC,G5
3	2	BLT34X412NC	BLT,HEX,3/4,4-1/2,NC,G5
4	1	BLT58X412NC	BLT,HEX,5/8,4-1/2,NC,G5
5	1	LM380195	SHANK,LM,SPRING,WLD
6	1	LM380199	BRKT,SPRING,SHANK,12.86,35.58
7	1	LM380200	LOCK,ARM,SHANK,5.38,12.96
8	1	LM380201	SHANK,PLOW,INJCTR,7,ASSY
9	1	LM390068	TIGHTNR,SPRING,ARM,DBL,ASSY
10	1	LM700007	PT,CHISEL,SWEEP
11	1	NUT12LOCKNC	NUT,LOCK,1/2,NC,G5
12	1	NUT1JAMLNF	NUT,JAM,NYLOCK,1-14,NF,G8
13	3	NUT34LOCKNC	NUT,LOCK,3/4,NC
14	1	NUT58LOCKNC	NUT,LOCK,5/8,NC,G5
15	1	SPRP516X2	PIN,ROLL,5/16,2
16	1	STI610762-3	PIN,1.6.69
17	1	WSH34FLAT	WSH,FLAT,3/4
18	1	BLT58X6NF	BLT,HEX,5/8,6,NF,G8
19	1	NUT58LOCKNF	NUT,LOCK,PUNCH,5/8,NF,G8
20	2	WSH58FLAT	WSH,FLAT,5/8



Reverse Chain Kit Parts Breakdown

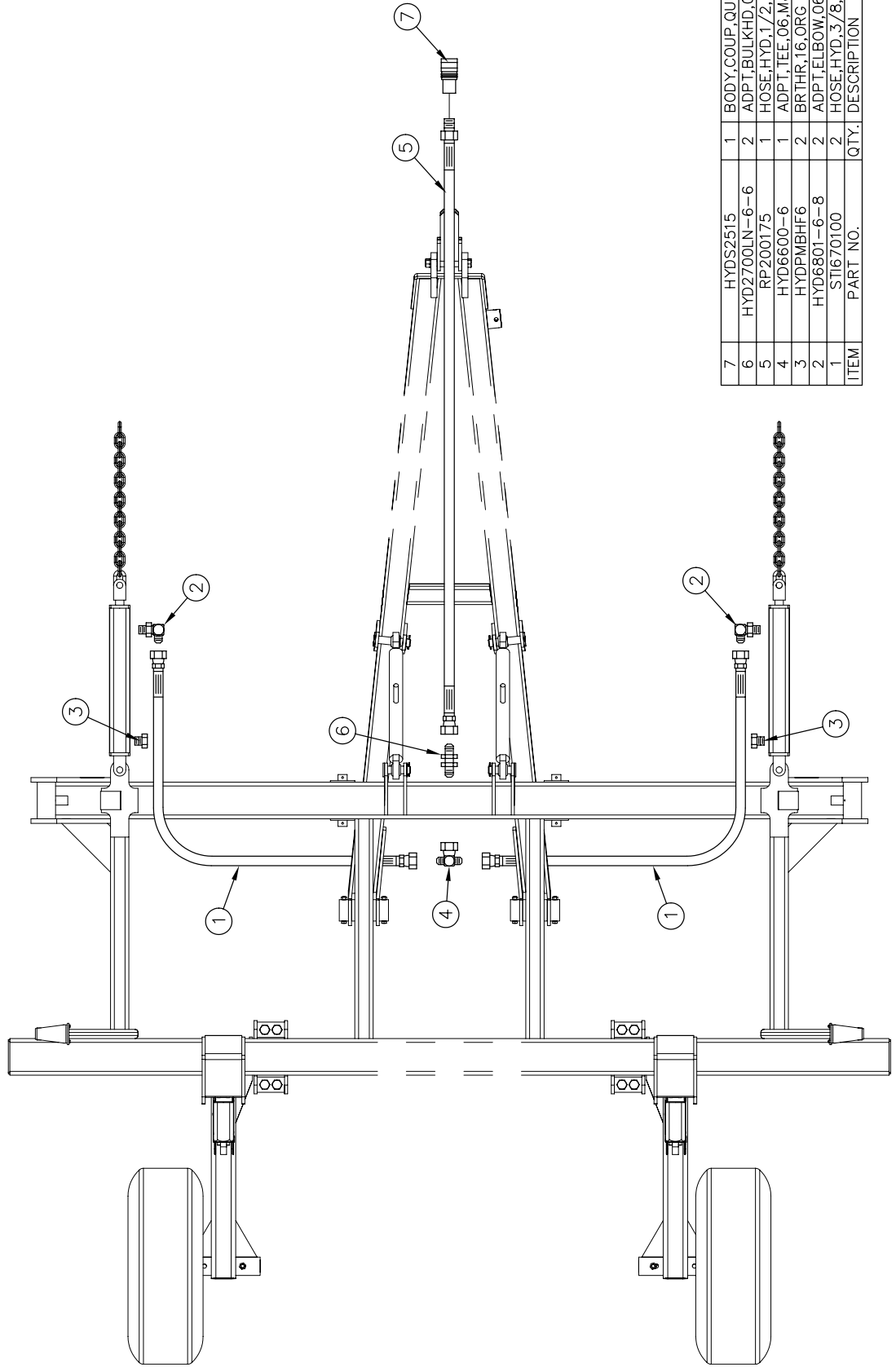


NOTES

1. CUT CHAIN EQUAL FOR BOTH SIDES
2. EACH CHAIN WILL HAVE TO BE CUT TO FIT EACH INDIVIDUAL SITUATION
3. SEE DRAWING LM380133 FOR HYDRAULIC BREAKDOWN

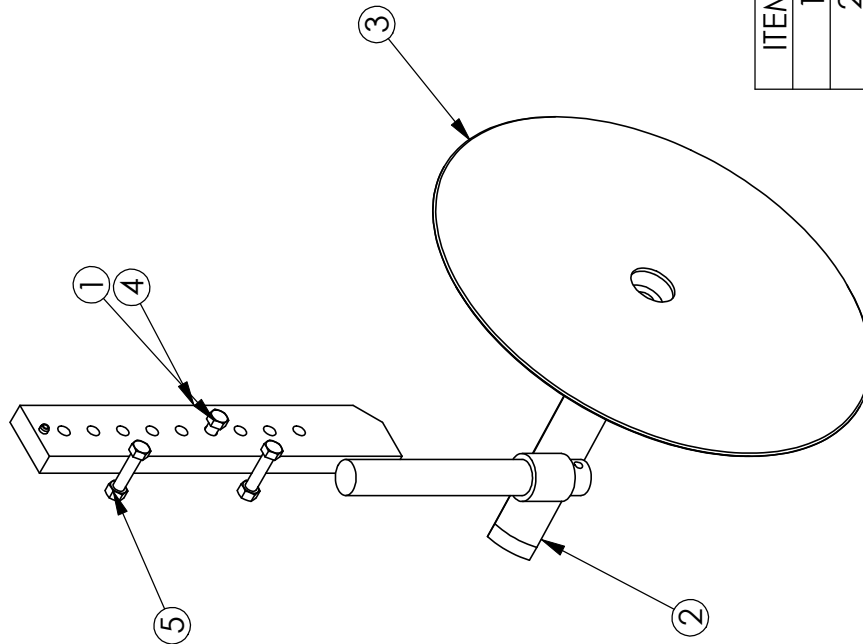
ITEM #	QTY	PART #	DESCRIPTION
1	360	CHA12IR	CHAIN, .5, PROOF, COIL
2	2	LM310284	CYL, HYD, 2, 20, TIEROD, 2500PSI, PNT
3	1	LM380133	ASSY, HYD, TLBR, REV, CYL
4	2	SPCL608	CONN, CHAIN, 1/2, HT
5	2	SPCLV651	CLEVIS, 651, .625, 2, 5
6	2	SPLK12	LINK, LAP, 1/2
7	2	SPRLK12	LINK, RAPID, 1/2

Reverse Chain Kit Hydraulic Breakdown



ITEM	PART NO.	QTY.	DESCRIPTION
7	HYDS2515	1	BODY, COUP, QUICK, 08, FORG
6	HYD2700LN-6-6	2	ADPT, BULKHD, 06, MJC, 06, MJC
5	RP200175	1	HOSE, HYD, 1/2, 123, 06F, J, 08RA
4	HYD6600-6	1	ADPT, TEE, 06, MJC, 06, MJC, 06, F, J
3	HYDPM6HF6	2	BRTHR, 16, ORG
2	HYD6801-6-8	2	ADPT, ELBOW, 06, MJC, 08, MORG
1	STI670100	2	HOSE, HYD, 3/8, 84, 06F, J, 06F, J

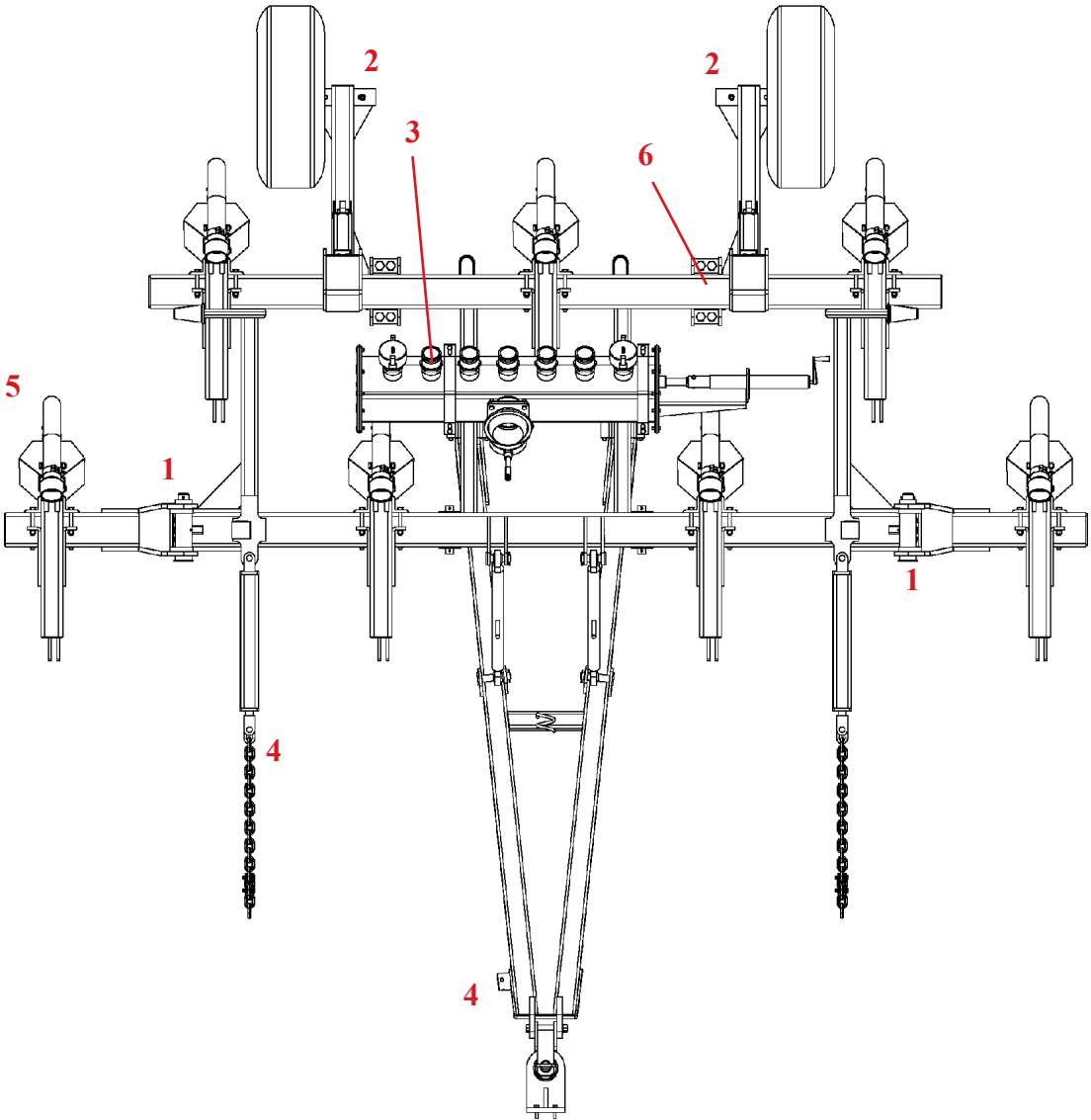
20" Coultter Kit Breakdown



SEE YETTER INSTRUCTION FOR COULTER
& COULTER MOUNT ASSEMBLY.

ITEM #	QTY.	PART #	DESCRIPTION
1	3	BLT12X212NC	BLT,HEX,1/2,2-1/2,NC,G5
2	1	LM200005	COULTER,MOUNT,ASSY
3	1	LM200006	COULTER,DISC,20",SMOOTH
4	1	LM380080	BRKT,COULTER,ADJ,WLD
5	3	NUT12LOCKNC	NUT,LOCK,1/2,NC,G5
6	1	SPRP38X112	PIN,ROLL,3/8,1-1/2

Maintenance and Lubrication



- | | | |
|----|---|-----------|
| 1. | Grease Wing Pivot | Daily |
| 2. | Check Rim,Tire,Hubs | Daily |
| 3. | Check hoses & manifolds for plugging | As Needed |
| 4. | Inspect hitch & safety chains | Weekly |
| 5. | Inspect injection method | Weekly |
| 6. | Grease wheel lift assembly | Daily |
| 7. | Inspect all hydraulic fittings,hoses, & cylinders | Daily |



SAC • Sioux Automation • 877 1st Ave NW • Sioux Center, IA 51250
PH: (712-722-1488) • Toll Free: 1-866-722-1488
www.siouxautomation.com